



MSD Platinum (Touring/Stage)

MSD Platinum 25 R 1CT/8

The MSD Platinum lamps open up new levels of creative freedom in entertainment lighting, with powerful, compact and brilliantly intense light. Their compact, lightweight design provides the freedom to create smaller, lighter luminaires – for use at any location on stage. And their short arc, high color temperature and innovative reflector produce a sparkling, high beam intensity for outstanding color reproduction. They also offer long and reliable lifetime, high efficacy and fast replacement times. It all adds up to an intensely exciting creative experience.

Warnings and Safety

- A lamp breaking is extremely unlikely to have any impact on your health. If a lamp breaks, ventilate the room for 30 minutes and remove the parts, preferably with gloves. Put them in a sealed plastic bag and take it to your local waste facilities for recycling. Do not use a vacuum cleaner.

Product data

General information	
Operating Position	UNIVERSAL [Any or Universal (U)]
Main Application	Stage/Touring
Life to 50% Failures (Nom)	1500 h

Light technical	
Color Code	2
Luminous Flux (Nom)	26000 lm
Chromaticity Coordinate X (Nom)	297
Chromaticity Coordinate Y (Nom)	303
Correlated Color Temperature (Nom)	8000 K

Operating and electrical	
Power (Nom)	550 W
Voltage (Max)	115 V
Voltage (Min)	85 V

Controls and dimming	
Dimmable	Yes

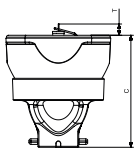
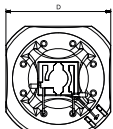
Luminaire design requirements	
Pinch Temperature (Max)	350 °C
Pinch Temperature (Max)-DUP(do not use)	350 °C

MSD Platinum (Touring/Stage)

Product data	
Full product code	871869961403400
Order product name	MSD Platinum 25 R 1CT/8
EAN/UPC - Product	8718699614034
Order code	928495905314
Numerator - Quantity Per Pack	1

Numerator - Packs per outer box	8
Material Nr. (12NC)	928495905314
Net Weight (Piece)	108.000 g

Dimensional drawing



MSD Platinum 25 R 1CT/8

Product	D (max)	O	C (max)
MSD Platinum 25 R 1CT/8	54.5 mm	1.4 mm	60 mm

Photometric data

